

2001 Butterfield Road
Suite 193
2001 Butterfield Road
Downers Grove, IL 60515



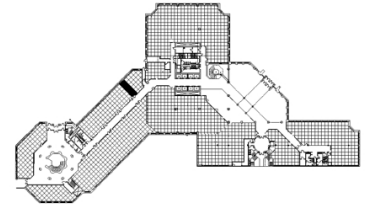
DETAILS

Square Feet: 376 S.F.
Net Rent: \$19.75/S.F.
OP. Expense: \$9.55/S.F.
Tax: \$2.67/S.F.
Gross Rent: \$31.97/S.F.

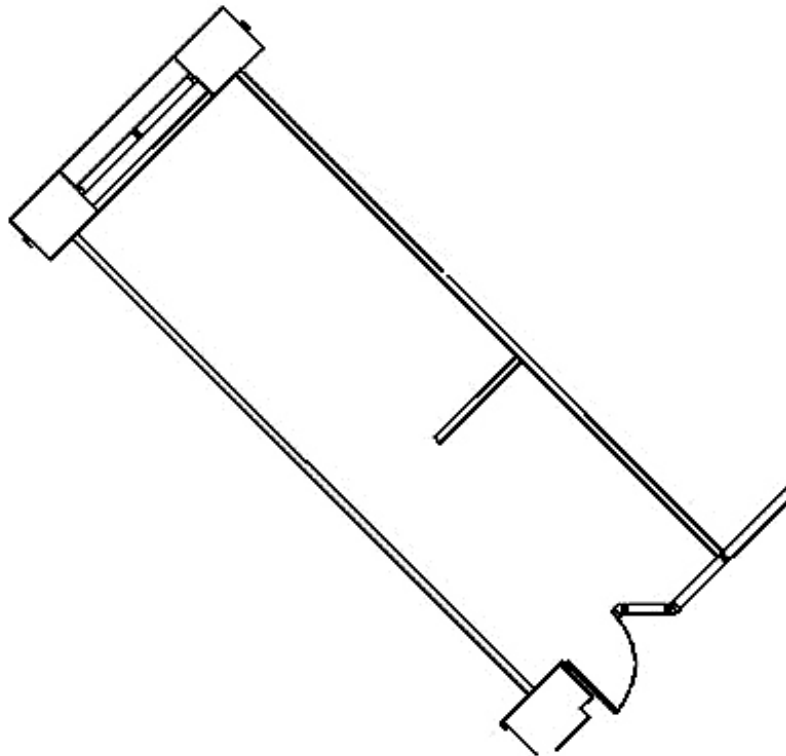
SUITE FEATURES

- Esplanade Lobby Level
- Near Parking Garage and Elevators
- Reception Area
- Work area
- 11-Foot Ceilings
- View of Entrance and Landscape
- Large Training Rooms
- Esplanade at Locust Point Amenities 9.24.19

FIRST FLOOR PLAN



SPACE PLAN



HAMILTON PARTNERS - Sponsoring Broker

David Andrews

✉ da@hpre.com

C 6303270566

Philip Sheridan

✉ phil_sheridan@hpre.com

P 6307195567

C 6303032108