

Esplanade I (2001 Butterfield Road)

Suite 274

2001 Butterfield Road

Downers Grove, IL 60515

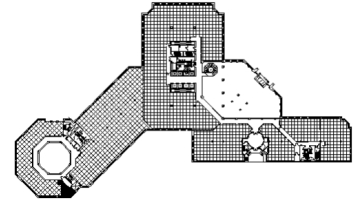
HAMILTON PARTNERS
www.hamiltonpartners.com



SUITE FEATURES

- Beautiful office that can hold up to 3 people
- Located near building health club and multiple amenities
- Move-in ready!
- Esplanade at Locust Point Amenities 9.24.19

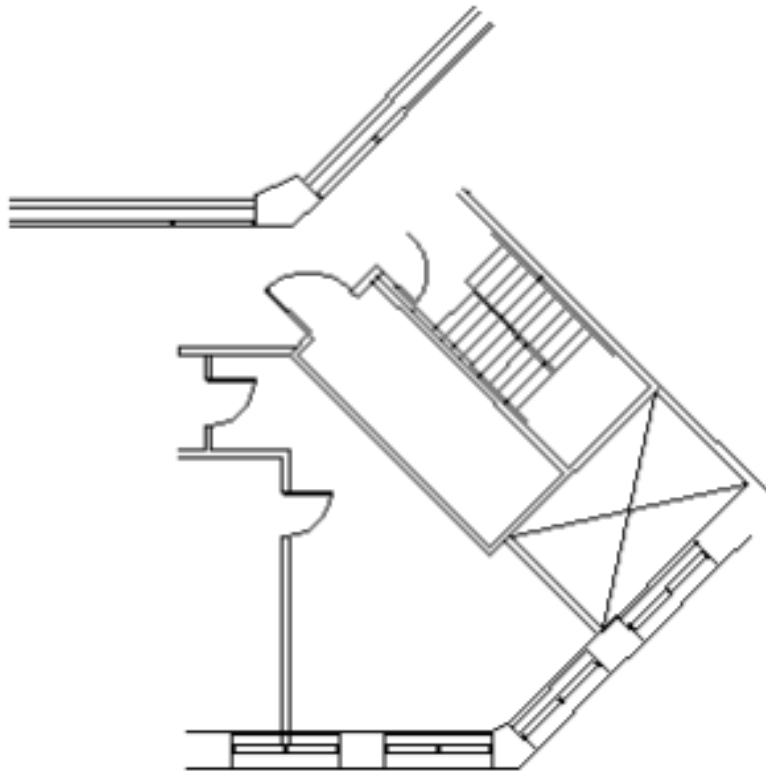
SECOND FLOOR FLOOR



DETAILS

Square Feet: 445 S.F.
Net Rent: \$19.75/S.F.
OP. Expense: \$9.55/S.F.
Tax: \$2.67/S.F.
Gross Rent: \$31.97/S.F.

SPACE PLAN



CONTACT INFORMATION

David Andrews

✉ da@hpre.com

P 630-719-5565

F 630-719-5570

Philip Sheridan

✉ phil_sheridan@hpre.com

P 630-719-5567

F 630-719-5570