

2001 Butterfield Road

Suite 266

2001 Butterfield Road, Downers Grove, IL
60515



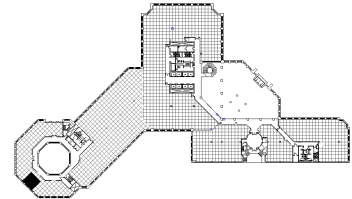
DETAILS

Square Feet: 450 S.F.
Net Rent: \$19.75/S.F.
OP. Expense: \$10.03/S.F.
Tax: \$2.57/S.F.
Gross Rent: \$32.35/S.F.

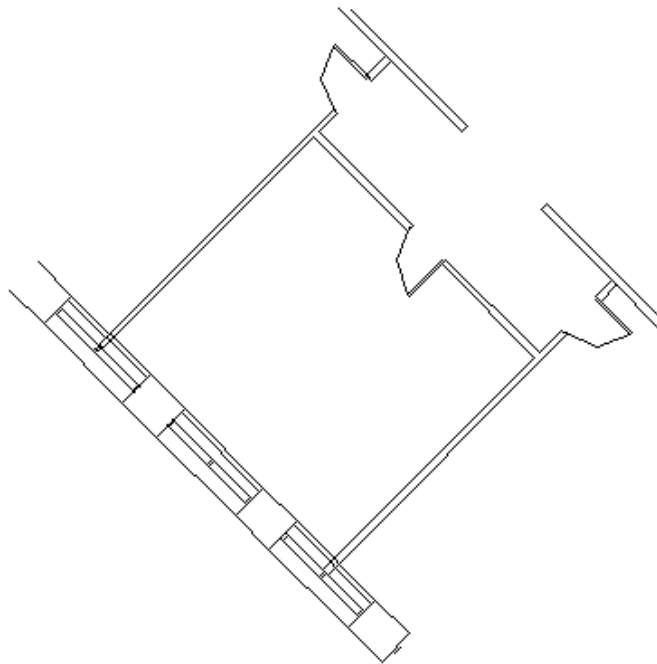
SUITE FEATURES

- View Amenities
- Last rotunda space available!
- Perfect for 1 or 2 person office
- South facing suite that floods with sunlight
- Close proximity to amenities at the Esplanade Complex

SECOND FLOOR PLAN



SPACE PLAN



HAMILTON PARTNERS - Sponsoring Broker

David Andrews

☐ da@hpre.com

C 6303270566

Philip Sheridan

☐ phil_sheridan@hpre.com

P 6307195567

C 6303032108