

1901 Butterfield Road  
Suite 800  
1901 Butterfield Road  
Downers Grove, IL 60515  
[Click for Virtual Tour](#)

HAMILTON PARTNERS  
[www.hamiltonpartners.com](http://www.hamiltonpartners.com)



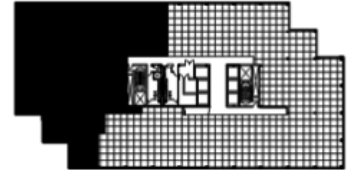
## DETAILS

**Square Feet:** 10,894 S.F.  
**Net Rent:** \$19.75/S.F.  
**OP. Expense:** \$10.30/S.F.  
**Tax:** \$2.76/S.F.  
**Gross Rent:** \$32.26/S.F.

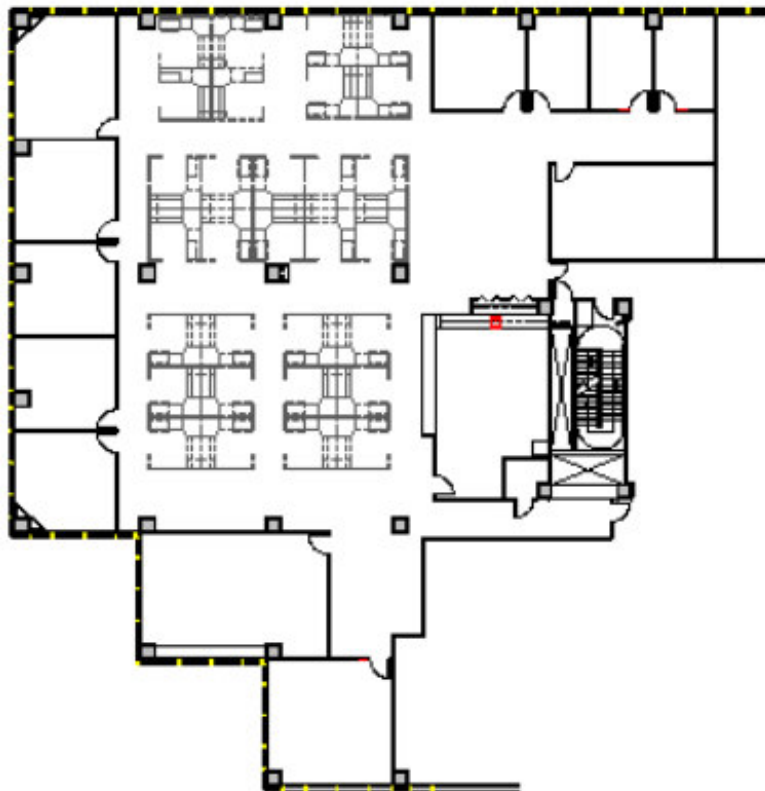
## SUITE FEATURES

- Beautiful Hayworth furniture available!!!
- Perfect end-suite with northern views
- 10 private offices
- Offices along northern facade have incredible millwork glass walls
- 2 large conference rooms
- 34 existing workstations
- Large eat-in breakroom

## EIGHTH FLOOR PLAN



## SPACE PLAN



HAMILTON PARTNERS - Sponsoring Broker

**David Andrews**

[da@hpre.com](mailto:da@hpre.com)

C 6303270566

**Philip Sheridan**

[phil\\_sheridan@hpre.com](mailto:phil_sheridan@hpre.com)

P 6307195567

C 6303032108