

1901 Butterfield Road

Suite 810

*1901 Butterfield Road, Downers Grove, IL
60515*

HAMILTON
www.hamiltonpartners.com **PARTNERS**



DETAILS

Square Feet: 4,598 S.F.

Net Rent: \$19.75/S.F.

OP. Expense: \$10.30/S.F.

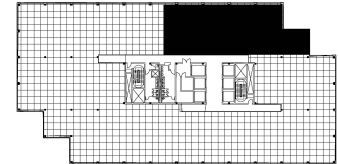
Tax: \$2.76/S.F.

Gross Rent: \$32.26/S.F.

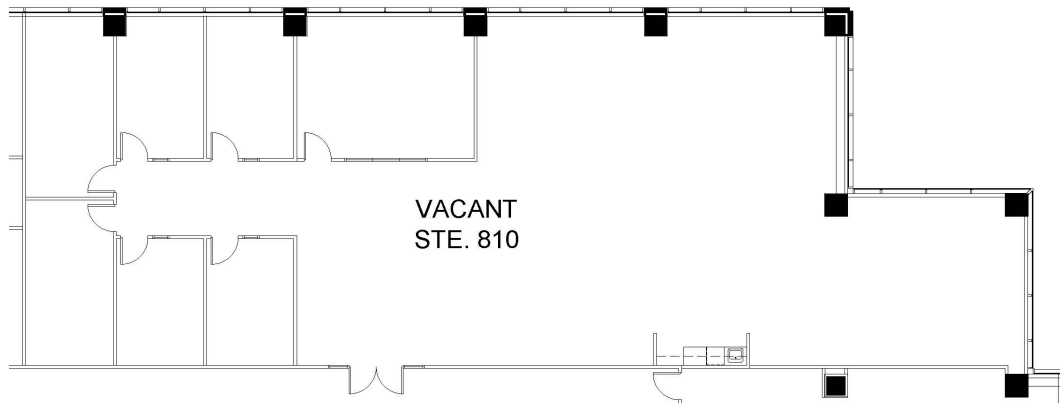
SUITE FEATURES

- 6 Private Offices
- 2 Large conference room
- Large kitchen with sink
- Open areas for workstations
- Glass Entry in Elevator Lobby

EIGHTH FLOOR PLAN



SPACE PLAN



HAMILTON PARTNERS - Sponsoring Broker

Philip Sheridan

✉ phil_sheridan@hpre.com

P 6307195567

C 6303032108

David Andrews

✉ da@hpre.com

C 6303270566