

1901 Butterfield Road

Suite 650

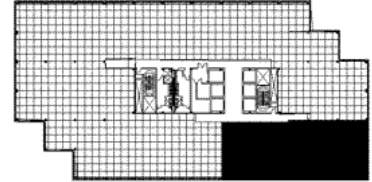
1901 Butterfield Road, Downers Grove, IL
60515



SUITE FEATURES

- Incredible corner space
- Double-glass entry doors with reception
- Glass conference room
- Perimeter private offices with sidelights
- Kitchen with break area
- Workroom

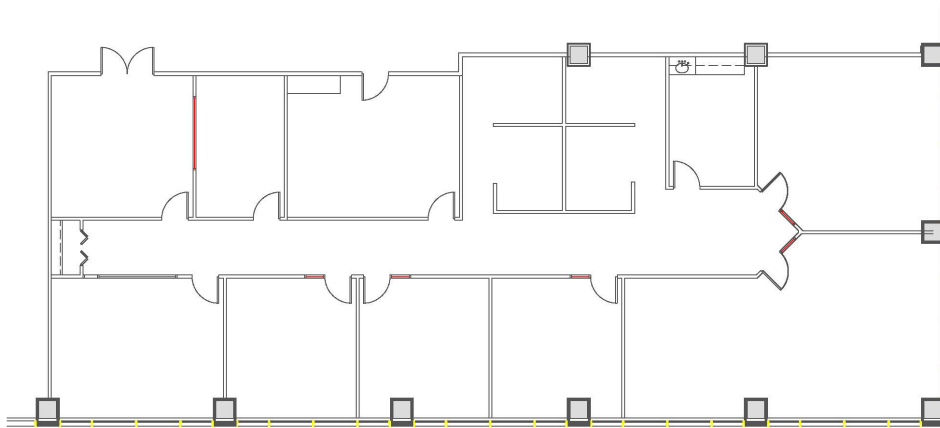
SIXTH FLOOR FLOOR PLAN



DETAILS

Square Feet: 4,822 S.F.
Net Rent: \$19.75/S.F.
OP. Expense: \$9.76/S.F.
Tax: \$2.97/S.F.
Gross Rent: \$32.26/S.F.

SPACE PLAN



HAMILTON PARTNERS - Sponsoring Broker

Philip Sheridan

phil_sheridan@hpre.com

P 6307195567

C 6303032108

David Andrews

da@hpre.com

C 6303270566