

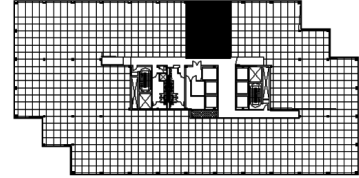
1901 Butterfield Road
Suite 920
1901 Butterfield Road
Downers Grove, IL 60515



SUITE FEATURES

- Glass entry off elevator lobby!
- Efficient layout
- 2 interior offices with sidelights
- Large amount of millwork for storage/work area

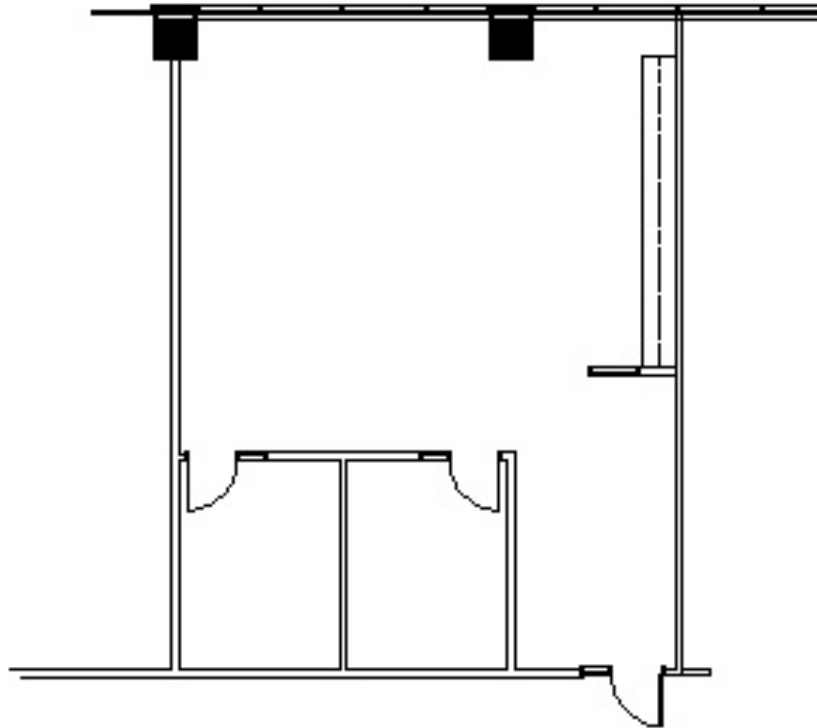
NINTH FLOOR PLAN



DETAILS

Square Feet: 1,368 S.F.
Net Rent: \$19.75/S.F.
OP. Expense: \$9.34/S.F.
Tax: \$2.87/S.F.
Gross Rent: \$32.26/S.F.

SPACE PLAN



HAMILTON PARTNERS - Sponsoring Broker

Philip Sheridan

✉ phil_sheridan@hpre.com

P 6307195567

C 6303032108

David Andrews

✉ da@hpre.com

C 6303270566

Paul O'Connor

✉ poconnor@hamiltonpartners.com

C 6309210142