

1901 Butterfield Road

Suite 220

*1901 Butterfield Road, Downers Grove, IL
60515*

HAMILTON
www.hamiltonpartners.com **PARTNERS**



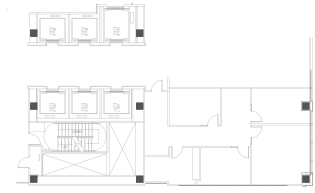
DETAILS

Square Feet: 1,210 S.F.
Net Rent: \$19.75/S.F.
OP. Expense: \$9.58/S.F.
Tax: \$2.84/S.F.
Gross Rent: \$32.26/S.F.

SUITE FEATURES

- 2 exterior offices
- Workroom
- Elevator exposure with glass door suite entry
- Overlooks beautiful indoor atrium and outdoor pond
- Esplanade at Locust Point Amenities 9.24.19

2nd Floor FLOOR PLAN



SPACE PLAN



HAMILTON PARTNERS - Sponsoring Broker

David Andrews

☐ da@hpre.com

C 6303270566

Philip Sheridan

☐ phil_sheridan@hpre.com

P 6307195567

C 6303032108