

**1901 Butterfield Road**  
*Suite 190*  
1901 Butterfield Road  
Downers Grove, IL 60515

# HAMILTON PARTNERS

www.hamiltonpartners.com



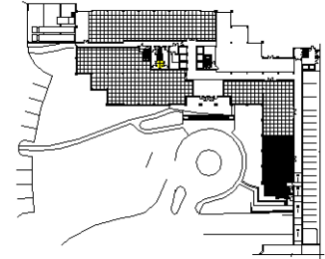
## DETAILS

**Square Feet:** 3,493 S.F.  
**Net Rent:** \$19.75/S.F.  
**OP. Expense:** \$9.34/S.F.  
**Tax:** \$2.87/S.F.  
**Gross Rent:** \$32.26/S.F.

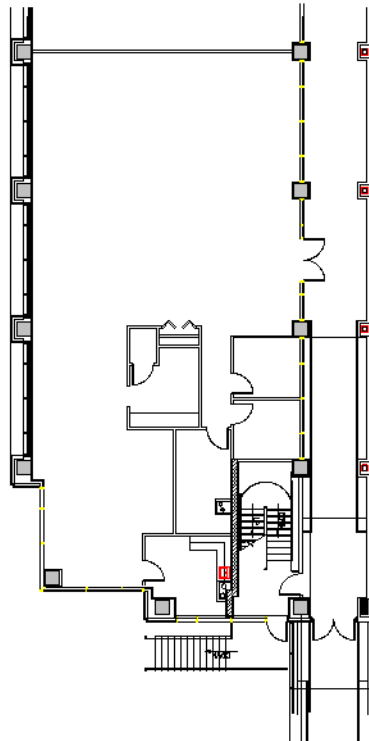
## SUITE FEATURES

- First floor space with high ceilings
- 4 private offices
- Conference room
- Kitchen and workroom
- Open area has full height windows

## FIRST FLOOR PLAN



## SPACE PLAN



## HAMILTON PARTNERS - Sponsoring Broker

**David Andrews**

✉ [da@hpre.com](mailto:da@hpre.com)

C 6303270566

**Philip Sheridan**

✉ [phil\\_sheridan@hpre.com](mailto:phil_sheridan@hpre.com)

P 6307195567

C 6303032108

**Paul O'Connor**

✉ [poconnor@hamiltonpartners.com](mailto:poconnor@hamiltonpartners.com)

C 6309210142