

FOR LEASE >> 23,405 SF AVAILABLE
1225 GREENBRIAR DRIVE, SUITE M
ADDISON, IL 60101



Meadows Business Park
1225 Greenbriar Dr., Suite M
Addison, IL 60101

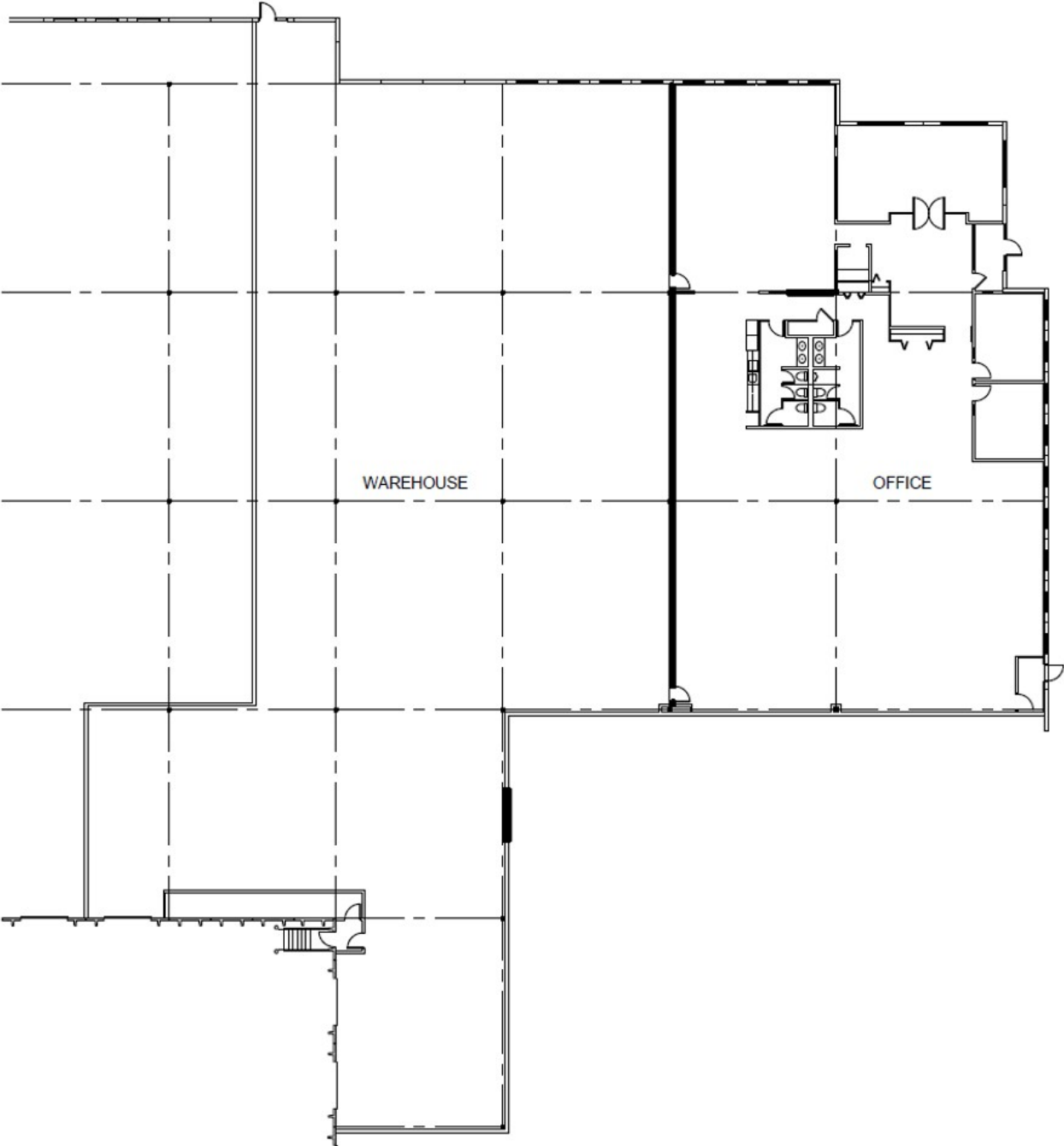
HAMILTON
PARTNERS

industrial@hpre.com
630-250-9700
300 Park Boulevard
Itasca, IL 60143

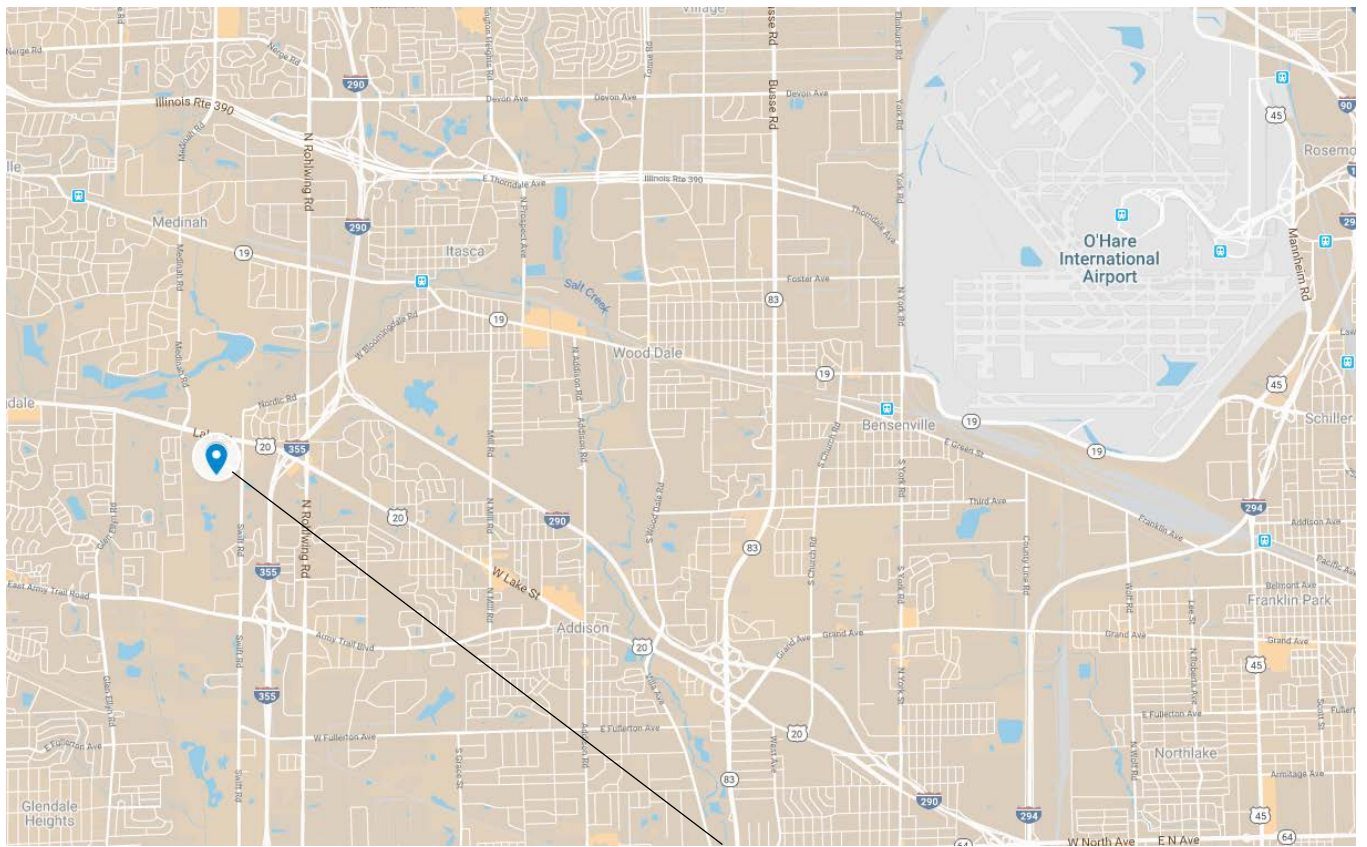
FEATURES

- > 23,405 SF available for lease
- > 7,958 SF office
- > 132,081 SF total building
- > 18' clear height
- > 32' x 40' bay spacing
- > 1 exterior loading docks
- > 31 car parking spaces
- > Available 12/1/18

SPACE PLAN



SITE LOCATION



1225 Greenbriar Dr., Suite M

Location

- › Easy access to O'Hare International Airport and Metropolitan Chicago via I-290 and I-355
- › Multiple hotels and restaurants nearby, including: Eaglewood Resort & Spa, The Westin Chicago Northwest



1225 GREENBRIAR DRIVE, SUITE M ADDISON, IL 60101

