



Arboretum Lakes
1001 Warrenville Road
Lisle, IL 60532
[Map this location](#)



Stunning New Furnished Spec Suite Available Immediately!

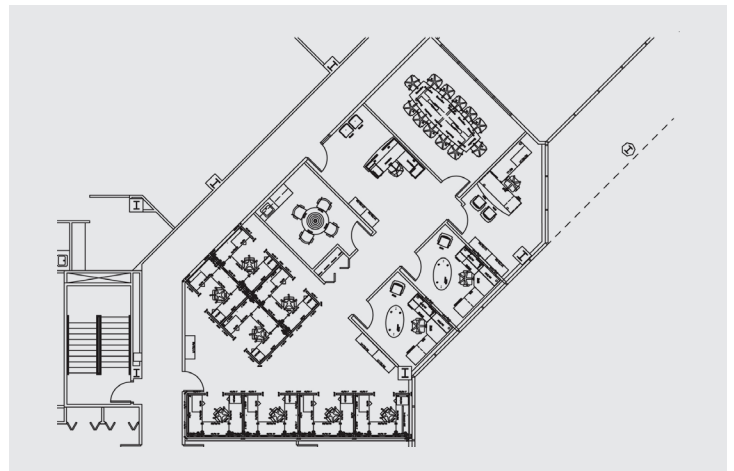
2,547 SF - 2nd Floor - Suite 210

Building Location:	Lisle, IL
Year Built:	1986
Total Square Footage:	136,226 S.F.
Typical Floor Size:	30,000 S.F.
Parking Ratio:	3.9/1000

Building Facts

- ◆ 24-Hour Card-Key Access
- ◆ 3 Common Conference Rooms On-Site
- ◆ 2 Full Service Restaurants
- ◆ 8,600 S.F. Full Service Health Club
- ◆ Manned Security
- ◆ Beautiful Outdoor Patio
- ◆ On-Site Management/Engineering Staff

Suite 210 Floor Plan



Arboretum Lakes Video



Contact Information

David Andrews

Email

Phone: 630-719-5565

Fax: 630-719-5570

Philip Sheridan

Email

Phone: 630-719-5567

Fax: 630-719-5570

Owned by:

MILLBROOK
REAL ESTATE COMPANY

Managed by:

HAMILTON PARTNERS