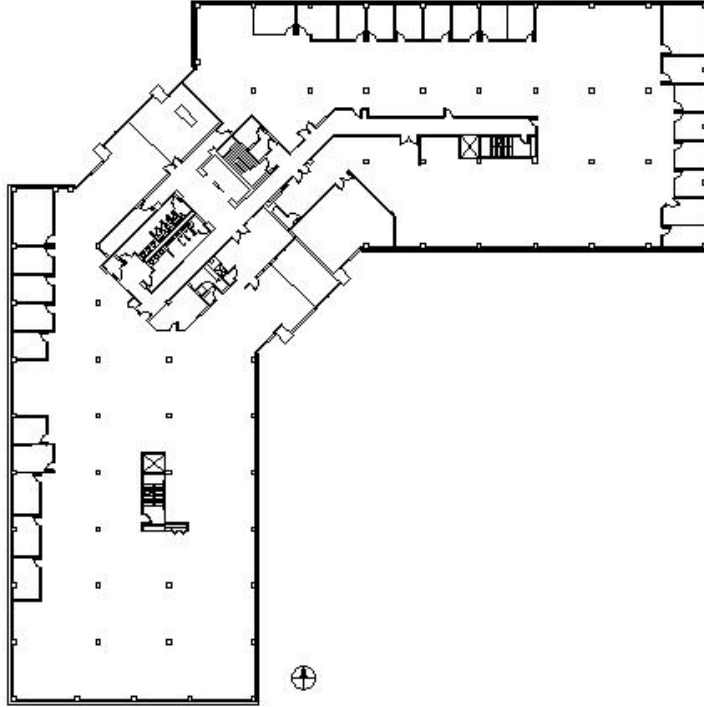


555 PIERCE



Typical Floor Size is 32,000 SF



Building Location:	555 Pierce Itasca, IL 60143
Year Built:	1987
Total Square Footage:	96,814 S.F.
Typical Floor Size:	32,271 S.F.
Parking Ratio:	3.91/1000
OP. Expense:	\$7.74/S.F.
Tax:	\$2.33/S.F.

Building Amenities

- 3 Story Class "A" Building
- Restaurants
- Hotels & Health Club Nearby
- Great Access to O'Hare and Chicago
- Energy Star Certified
- AT&T and Comcast Service Available

**HAMILTON
PARTNERS**

Contact Information:
www.hpre.com
630-250-9700

Patrick McKillen
pmckillen@hpre.com
P 630-250-4907

Paul O'Connor
poc@hpre.com
P 630-250-4876

Scott Schroeder
sschroed@hpre.com
P 630-250-4898