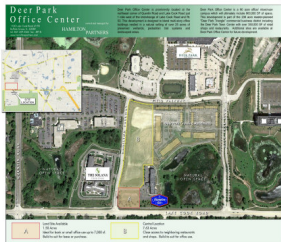


## Deer Park Office Center - Parcel A

21635 W Field Pkwy  
Deer Park, IL 60010

**HAMILTON**  
www.hamiltonpartners.com **PARTNERS**



### SUITE FEATURES

### DETAILS

- This site is part of the Deer Park Office Center, a 90 acre office campus, prominently located at the northeast corner of Quentin Road and Lake Cook Road just 1 mile west of the interchange of Lake Cook Road and Rt. 53.

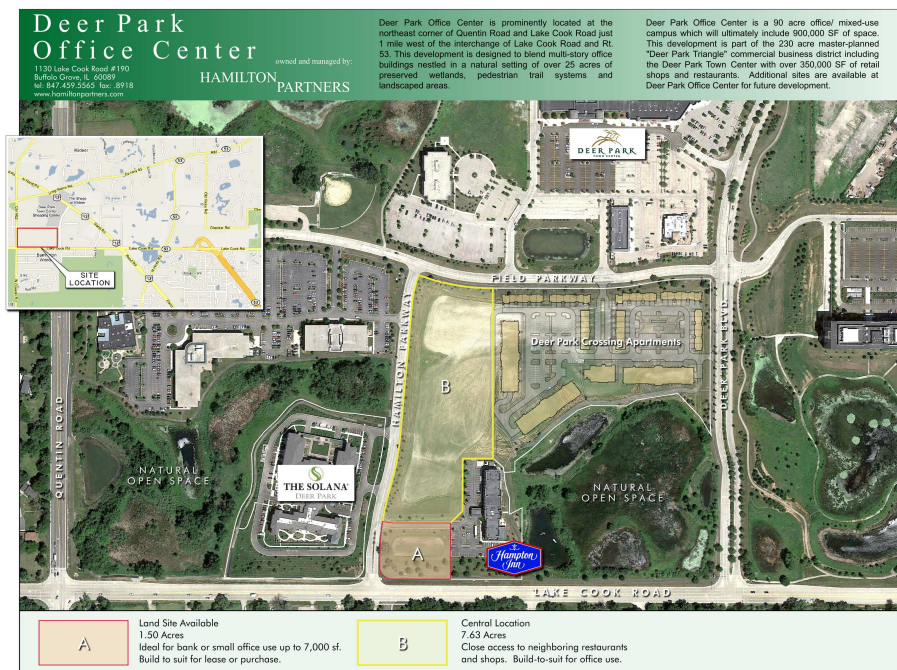
#### Parcel A:

Natural location with strong visibility along Lake Cook Road. Wooded Area and Natural Wetland environment as a backdrop. 1.5 Acre Site; Ideal for Bank or Small Office Use to 7,000 SF

#### Parcel B:

7.63 Acre Site; Close proximity to shops and restaurants; Available for build-to-suit.

### SITE AND BUILDING PLAN



### CONTACT INFORMATION

#### Tim Beechick

tim\_beechick@hamiltonpartners.com

P 847-459-5560

F 847-459-8918

#### Brian Lunt

brian@hppe.com

P 847-459-2249

F 847-459-8918

#### Mike Rolfs

mjrolfs@hppe.com

P 847-459-5561

F 847-459-8918

## Deer Park Office Center - Parcel A

21635 W Field Pkwy  
Deer Park, IL 60010

HAMILTON PARTNERS  
www.hamiltonpartners.com

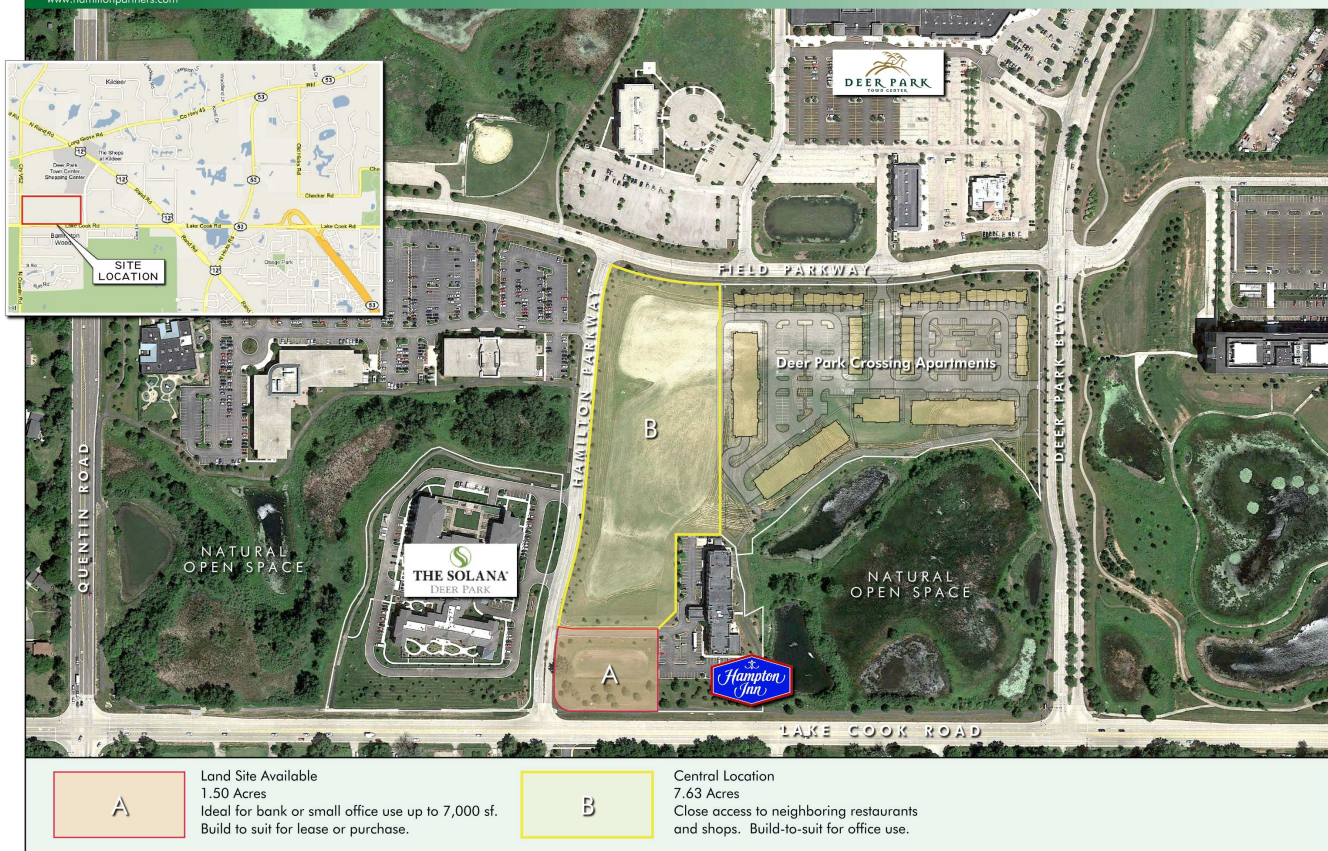
### Deer Park Office Center

1130 Lake Cook Road #190  
Buffalo Grove, IL 60089  
tel: 847.459.5565 fax: 8918  
www.hamiltonpartners.com

owned and managed by:  
HAMILTON PARTNERS

Deer Park Office Center is prominently located at the northeast corner of Quentin Road and Lake Cook Road just 1 mile west of the interchange of Lake Cook Road and Rt. 53. This development is designed to blend multi-story office buildings nestled in a natural setting of over 25 acres of preserved wetlands, pedestrian trail systems and landscaped areas.

Deer Park Office Center is a 90 acre office/ mixed-use campus which will ultimately include 900,000 SF of space. This development is part of the 230 acre master-planned "Deer Park Triangle" commercial business district including the Deer Park Town Center with over 350,000 SF of retail shops and restaurants. Additional sites are available at Deer Park Office Center for future development.



## CONTACT INFORMATION

### Tim Beechick

✉ [tim\\_beechick@hamiltonpartners.com](mailto:tim_beechick@hamiltonpartners.com)

P 847-459-5560

F 847-459-8918

### Brian Lunt

✉ [brian@hpre.com](mailto:brian@hpre.com)

P 847-459-2249

F 847-459-8918

### Mike Rolfs

✉ [mjrolfs@hpre.com](mailto:mjrolfs@hpre.com)

P 847-459-5561

F 847-459-8918