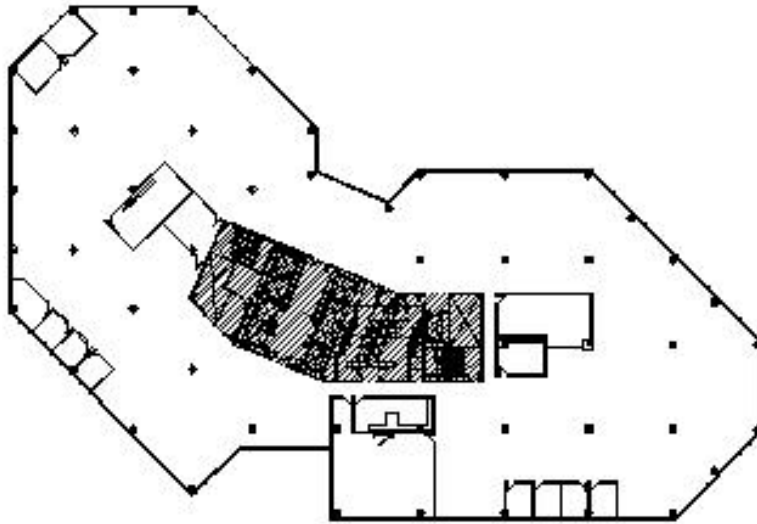


ONE PIERCE PLACE

The unique floor plans of One Pierce Place allow for flexibility in space planning. Tenants here benefit from a luxurious working environment and the latest in technology and service. Directly adjacent to both lobbies is parking within a three story, covered parking garage.



Typical Floor Size 33,000 SF



Building Location:	One Pierce Place Itasca, IL 60143
Year Built:	1987
Total Square Footage:	525,422 S.F.
Typical Floor Size:	33,000 S.F.
Parking Ratio:	4/1000
OP. Expense:	\$6.69/S.F.
Tax:	\$2.65/S.F.

Building Amenities

- 16 Story Class "A" Building
- On-Site Management
- Covered Parking
- Conference Room for 50
- Deli
- 24 Hour manned security
- Energy Star Certified
- AT&T, Comcast, Dish and Verizon Service Available

**HAMILTON
PARTNERS**

Contact Information:
www.hpre.com
630-250-9700

Patrick McKillen
pmckillen@hpre.com
P 630-250-4907

Paul O'Connor
poc@hpre.com
P 630-250-4876

Scott Schroeder
sschroed@hpre.com
P 630-250-4898