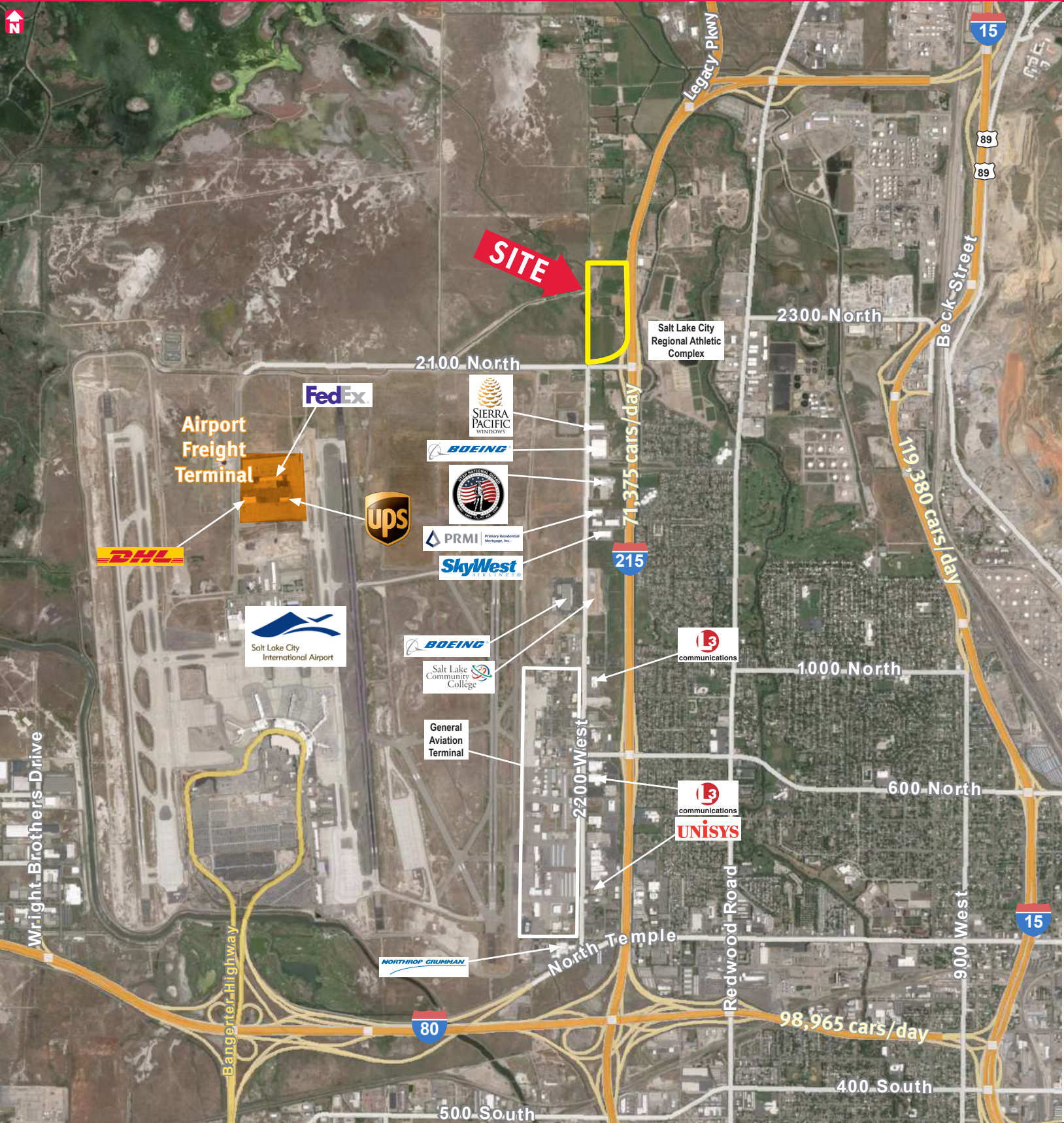


I-215 COMMERCE CENTER – PHASE I BUILDING A

2260 North 2200 West, Salt Lake City, Utah 84101



I-215 COMMERCE CENTER – PHASE I BUILDING A

2260 North 2200 West, Salt Lake City, Utah 84101



READY FOR TENANT  
IMPROVEMENTS

One Mile from the Salt Lake International Freight Terminal – UPS, FedEx and DHL

AVAILABLE  
102,146 SF

PROPERTY FEATURES

- Divisible to 16,641 SF
- 102,146 SF
- Approximately 10,900 SF Per Bay
- Build-to-Suit Office
- 22 Dock High Doors
- 4 Grade Level Doors
- Column Spacing: 52'x52'
- 28' Clear Height
- 112 Parking Spaces
- Prime Freeway Exposure
- Quick Access to I-215 and Legacy Parkway
- 10 Minutes from the Salt Lake International Airport, 9 Minutes from Downtown Salt Lake City and 14 Minutes from the Intermodal Yard

FOR MORE  
INFORMATION  
CONTACT

STEVE CONDIE, CCIM, SIOR  
801.809.5000  
scondie@ngacres.com



I-215 COMMERCE CENTER – PHASE I BUILDING A

2260 North 2200 West, Salt Lake City, Utah 84101

